



## Product Datasheet

<b>Product Name</b>	Anti-HA Tag (Mouse Monoclonal)
<b>Cata No</b>	CB100005M
<b>Immunogen</b>	Synthetic peptide from influenza hemagglutinin epitope coupled to KLH.
<b>Raised In</b>	Mouse
<b>Clonality</b>	HA.C5
<b>Form</b>	Liquid

### Specificity

HA-tag monoclonal antibody. Recognizes HA-tagged tagged proteins overpressed in cells,

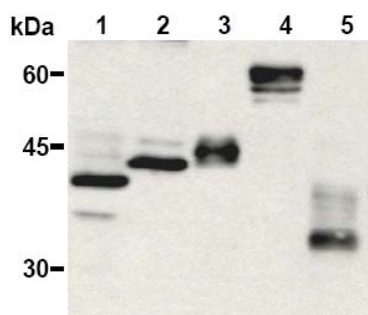
### Tested Applications

WB, IS and IP. Optimal working dilutions should be determined experimentally by the investigator. Prepare working dilution immediately before use. Suggested starting dilutions are as follows: Western Blot at dilutions of 1:1000. Immunoprecipitation and immunostaining at dilutions of 1:200.

**Concentration** 100ug/100ul

### Storage

Storage Buffer :PBS, pH 7.4 with 0.05% sodium azide.Stable for 1 year at -20°C from date of shipment. For maximum recovery of product, centrifuge the original vial after thawing and prior to removing the cap. Aliquot to avoid repeated freezing and thawing. Aliquot will be stale at 4°C for 3 months.



*Western blot analysis of various HA-tagged protein samples using M132-3.*

**\* For Non-Clinical Research Use Only \***